

Remove roof lining and sun visor. Remove the two clips that are located within the square holes showed in blue below – repeat for opposite side.

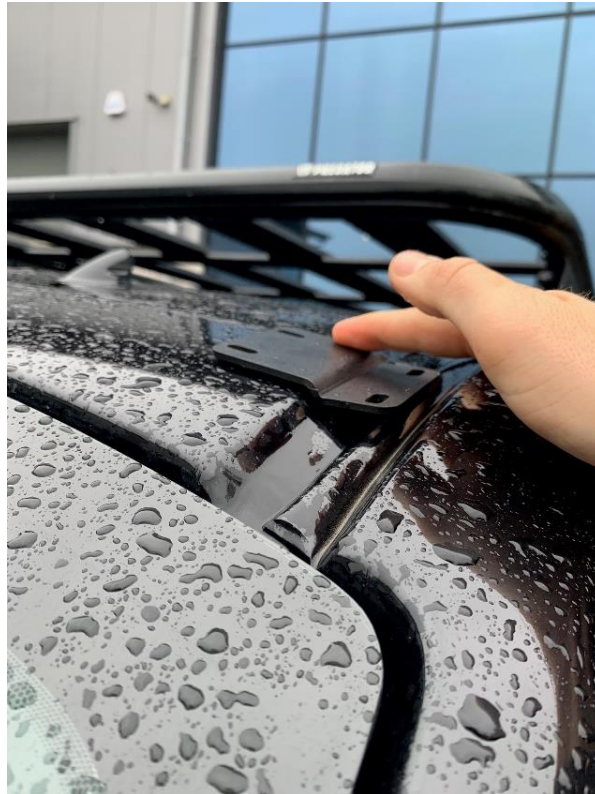


Drill a 6mm hole through the van roof, in the centre on the square hole shown below.



Place the mounting bracket on van roof like shown and place a bolt through the bracket hole and newly drilled hole in van roof.

You will now be able to mark where the second hole will need to be drilled.



The second hole should be roughly in the middle of the square hole shown below.



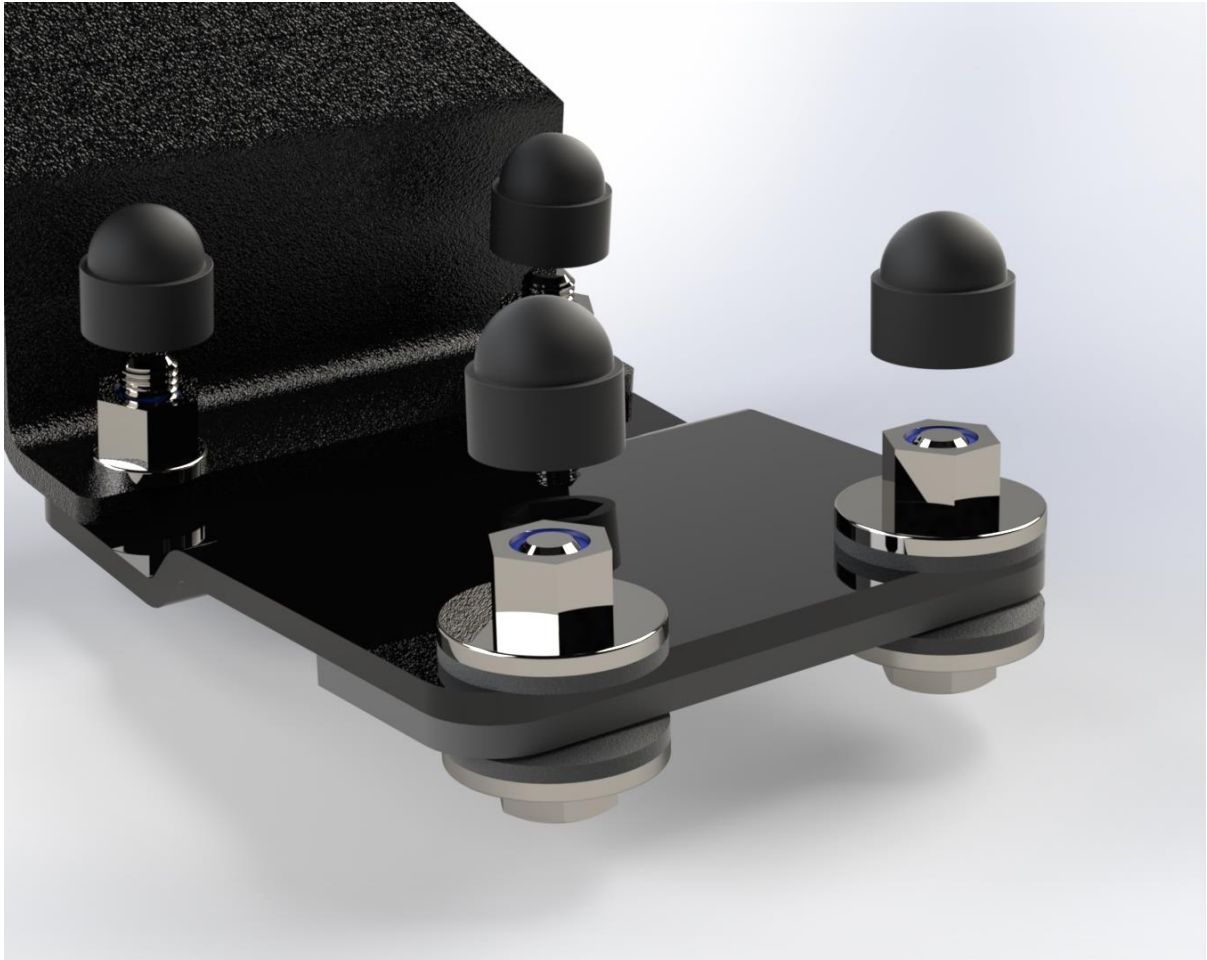
Fix lightbar bracket to the **top** of mounting bracket with fixings fitting from the underside as shown below. (Use assembly drawings for fittings reference)



Fit the relevant fittings from the inside of van with mounting pad against van roof. (Use assembly drawing for fittings reference)



Lightbar bracket & mounting bracket can now be installed onto van roof.



Once lightbar is fitted and mounting brackets adjusted and tightened in final position, fit plastic bolt caps.

Lightbar wiring to be routed & installed as per technician's discretion.

Sealant advised

