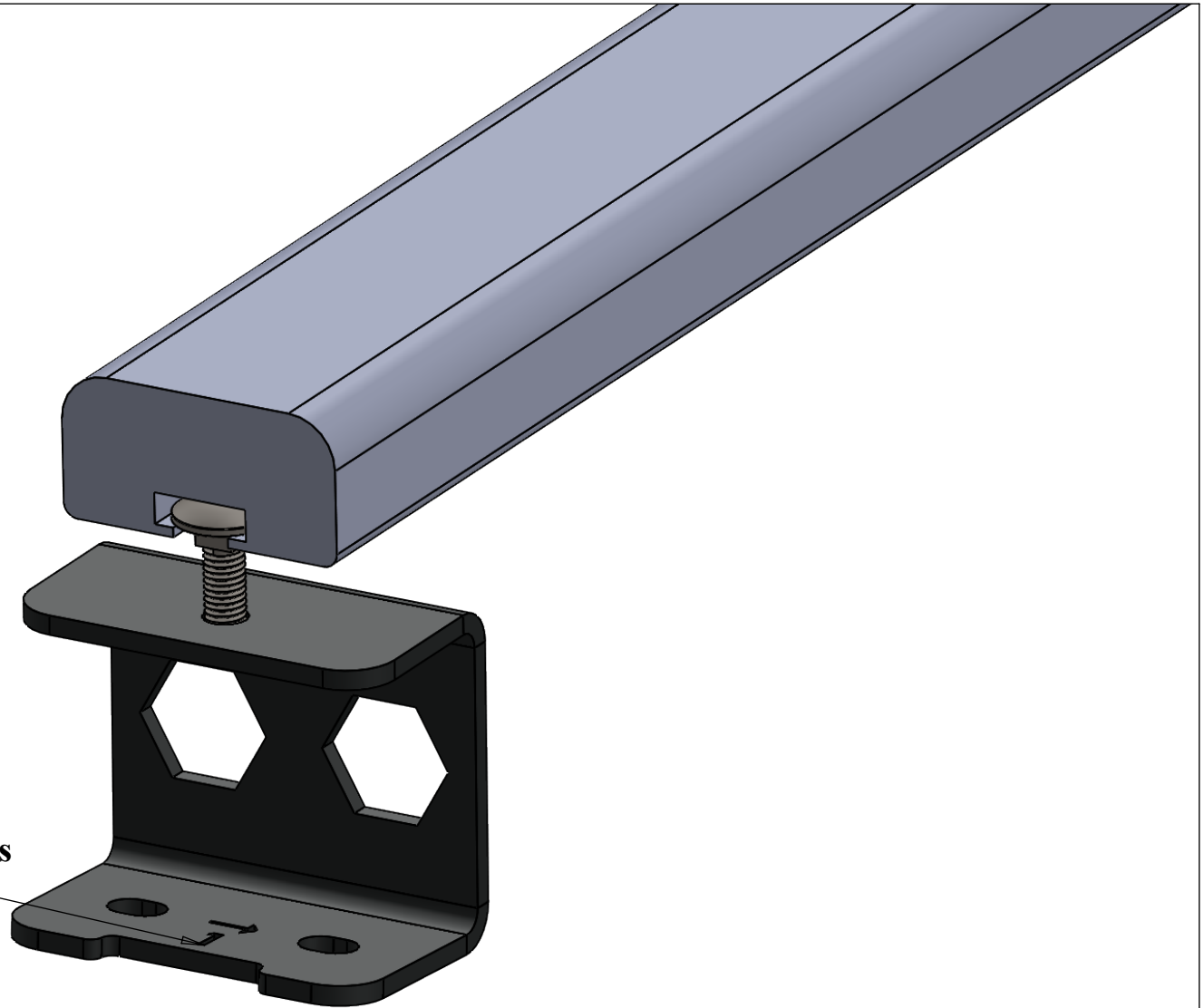


Recomended method.


1. Fit mounting brackets.
2. Loosely fit M8 Carriage bolt & fittings to the top.
3. Slide bolt within channel on underside of cross bar.
4. Repeat for opposite side.
5. Tighten all fittings.



**Directional arrow towards
front of vehicle**

1. - Front
2. - Centre
3. - Rear

File Location : S:\Folders\Vanimal Racking Backup\Documents\Solidworks Files\CUSTOM 23\L1 & L2\ROOF CROSS BARS\WR56-FITTINGKIT - 3 BAR SYSTEM\WR56-FITTINGKIT\WR56-FITTINGKIT-GUIDE-ASSY

REVISIONS				DRAWN	Will R	TITLE BRACKET FITTING GUIDE	<div></div>		
ISSUE	AMENDMENTS	DATE		DATE	14/03/2024				
				MATERIAL	304 SS				
				FINISH	--				
							DWG. NO. WR56-FITTINGKIT-GUIDE	REV A	SIZE A4